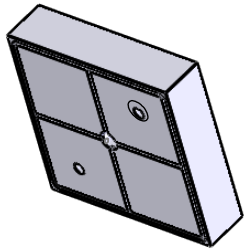
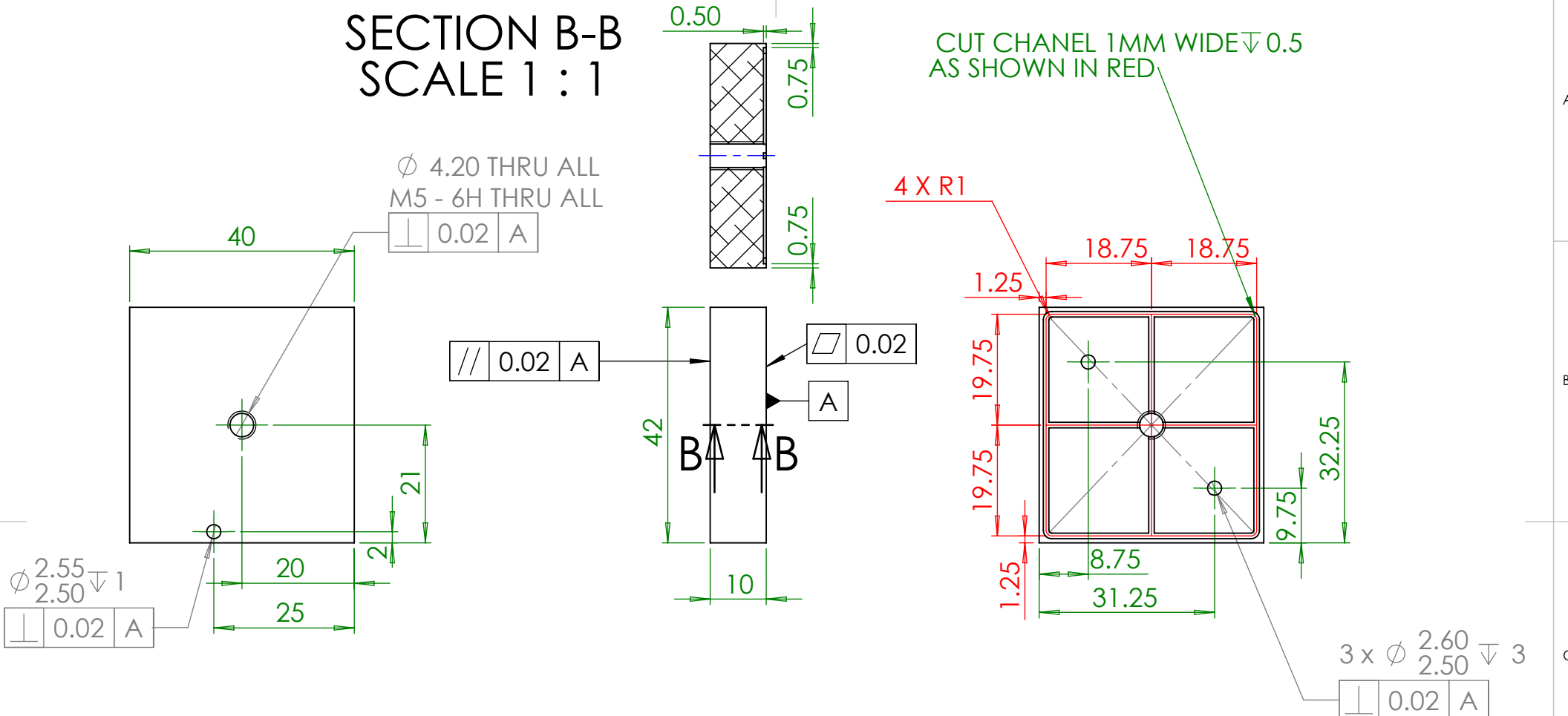


SECTION B-B SCALE 1 : 1



NOTES (UNLESS OTHERWISE SPECIFIED):		
DIMENSIONS ARE IN MILLIMETERS		
GENERAL TOLERANCES:	QUANTITY:	1
0<X<50mm: ± 0.1 mm	MATERIAL:	ALU
50<X<150mm: ± 0.2 mm	SURFACE TEXTURE (μm):	3.2 ∇ UNLESS STATED
100<X<1000mm: ± 0.3 mm	FINISH:	
ANGULAR: $\pm 0.2^\circ$		
GEOMETRIC TOLERANCES:		
ISO-2768-K		
1. DEBUR AND BREAK SHARP EDGES		
DRAWN	NAME	DATE
CHK'D	LC	01/09/2106
APPV'D		

DO NOT SCALE DRAWING		A4
University of Glasgow Department of Physics and Astronomy v1 Institute for Gravitational Research		
PROJECT:		
SUB-SYSTEM:		
ASSEMBLY:	glue stamper asmb	
PART NAME:	glue stamp chuck	
DWG NO.	LC_PPE_AUG_066	REV: v1
SCALE: 2:1	PROJ:	SHEET 1 OF 1